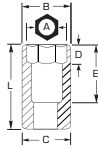


## 1/2" DRIVE IMPACT SOCKETS

- Proto® 6 Point Impact Sockets are ideal for use on stubborn or damaged fasteners, and also on fasteners made from soft materials.



- Radius-corner socket design
- Engages flats for better grip
- Improves the ability to turn worn or rounded fasteners

INCH	6	12	Nut End Outside Diameter (in) (B)	Drive End Outside Diameter (in) (C)	Nut Depth (in) (D)	Bolt Clearance Depth (in) (E)	Overall Length (in) (L)	Weight (lbs)
3/8	J7412H	J7412	41/64	15/16	11/32	27/32	1-1/2	0.17
7/16	J7414H	J7414	23/32	15/16	13/32	27/32	1-1/2	0.18
1/2	J7416H	J7416	51/64	15/16	13/32	27/32	1-1/2	0.18
9/16	J7418H	J7418	7/8	15/16	7/16	27/32	1-1/2	0.18
5/8	J7420H	J7420	1	1	1/2	27/32	1-1/2	0.20
11/16	J7422H	J7422	1-1/32	1-1/32	1/2	27/32	1-1/2	0.22
3/4	J7424H	J7424	1-7/64	1-7/64	51/64	27/32	1-1/2	0.24
13/16	J7426H	J7426	1-13/64	1-13/64	11/16	31/32	1-5/8	0.31
7/8	J7428H	J7428	1-17/64	1-9/32	43/64	31/32	1-5/8	0.34
15/16	J7430H	J7430	1-23/64	1-23/64	51/64	1-3/32	1-3/4	0.44
1	J7432H	J7432	1-1/2	1-1/2	25/32	1-3/32	1-3/4	0.55
1-1/16	J7434H	J7434	1-33/64	1-33/64	25/32	1-3/32	1-3/4	0.53
1-1/8	J7436H	J7436	1-19/32	1-19/32	25/32	1-1/32	2	0.65
1-3/16	J7438H	J7438	1-19/32	1-19/32	3/4	1-1/64	2	0.85
1-1/4	J7440H	J7440	1-3/4	1-3/4	3/4	1-3/4	2	0.78
1-5/16	J7442H	J7442	1-3/4	1-3/4	13/16	63/64	2	0.73
1-3/8	J7444H	J7444	1-51/64	1-5/8	15/16	1-3/32	2-1/8	0.72
1-7/16	J7446H	J7446	1-59/64	1-5/8	1	1-37/64	2-15/64	0.87
1-1/2	J7448H	J7448	2	1-5/8	1	1-37/64	2-15/64	1.03
1-9/16	J7450H	-	2-1/32	1-5/8	1	1-1/2	2-1/4	1.16

ASME B107.2

MM	6	12	Nut End Outside Diameter (in) (B)	Drive End Outside Diameter (in) (C)	Nut Depth (in) (D)	Bolt Clearance Depth (in) (E)	Overall Length (in) (L)	Weight (lbs)
8	J7408M	-	37/64	15/16	9/32	27/32	1-1/2	0.18
9	J7409M	-	41/64	15/16	3/8	27/32	1-1/2	0.18
10	J7410M	J7410MT	43/64	15/16	3/8	27/32	1-1/2	0.18
11	J7411M	J7411MT	23/32	15/16	3/8	27/32	1-1/2	0.18
12	J7412M	J7412MT	51/64	15/16	13/32	27/32	1-1/2	0.17
13	J7413M	J7413MT	51/64	15/16	7/16	27/32	1-1/2	0.16
14	J7414M	J7414MT	7/8	15/16	15/32	27/32	1-1/2	0.18
15	J7415M	J7415MT	15/16	15/16	1/2	27/32	1-1/2	0.18
16	J7416M	J7416MT	1	1	17/32	27/32	1-1/2	0.20
17	J7417M	J7417MT	1-1/32	1-1/32	9/16	27/32	1-1/2	0.22
18	J7418M	J7418MT	1-1/8	1-1/8	51/64	27/32	1-1/2	0.27
19	J7419M	J7419MT	1-7/64	1-7/64	47/64	27/32	1-1/2	0.25
20	J7420M	J7420MT	1-5/32	1-5/32	11/16	31/32	1-5/8	0.30
21	J7421M	J7421MT	1-13/64	1-13/64	43/64	31/32	1-5/8	0.30
22	J7422M	J7422MT	1-9/32	1-9/32	43/64	31/32	1-5/8	0.36
23	J7423M	J7423MT	1-3/8	1-3/8	43/64	31/32	1-5/8	0.39
24	J7424M	J7424MT	1-23/64	1-23/64	43/64	31/32	1-5/8	0.43
25	J7425M	-	1-3/8	1-3/8	51/64	1-3/32	1-3/4	0.48
26	J7426M	-	1-1/2	1-1/2	1-1/32	1-11/32	2	0.54
27	J7427M	-	1-1/2	1-1/2	1-1/32	1-11/32	2	0.62
28	J7428M	-	1-5/8	1-5/8	1-1/32	1-11/32	2	0.72
29	J7429M	-	1-5/8	1-5/8	1-1/64	1-11/32	2	0.67
30	J7430M	J7430MT	1-33/64	1-33/64	25/32	1-3/32	2	0.82
31	J7431M	-	1-33/64	1-33/64	51/64	1-3/32	2	0.83
32	J7432M	J7432MT	1-33/64	1-33/64	51/64	1-3/32	2	0.75
33	J7433M	-	1-27/32	1-27/32	1-1/64	1-9/32	2	0.95
34	J7434M	-	1-29/32	1-29/32	1-1/64	1-9/32	2	1.00
36	J7436M	-	2-1/64	2-1/64	1-3/16	1-11/32	2	0.89
38	J7438M	-	2-5/32	2-5/32	1-3/16	1-11/32	2-3/8	0.96
41	J7441M	-	2-19/64	2-19/64	1-21/64	1-17/32	2-3/8	1.20
46	J7446M	-	2-3/8	2-3/8	63/64	1-17/32	2-7/16	1.24

ASME B107.33M